

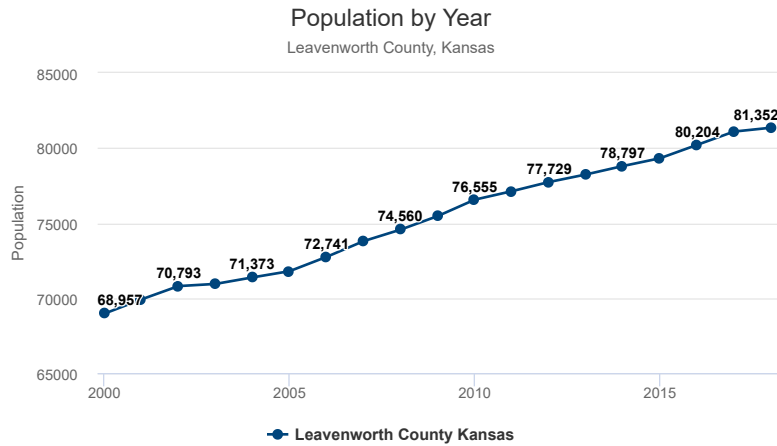


Leavenworth County, Kansas

Demographics

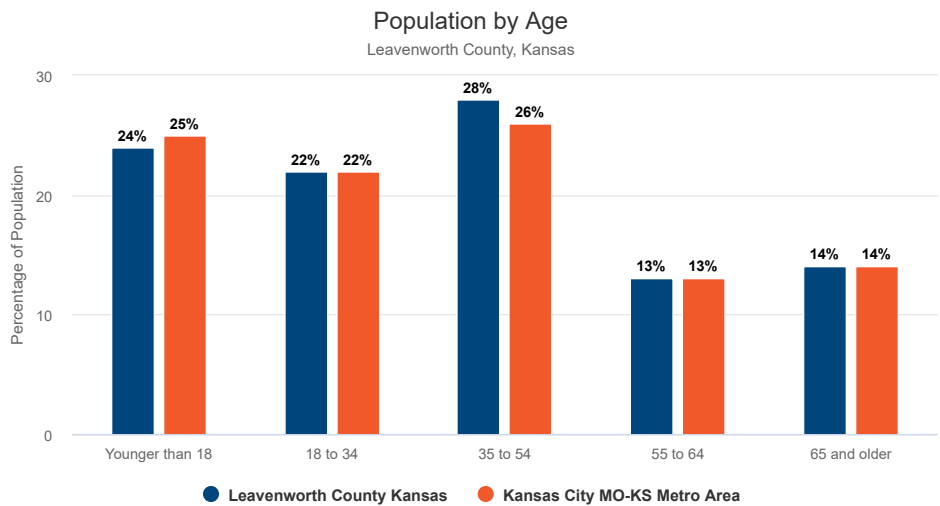
Leavenworth County, Kansas, saw a growth rate of 18 percent since 2000 and now its population stands at 81,352. For more information on Leavenworth County, please visit www.lvcountyed.org.

Population by Year



Source: U.S. Census, 2018

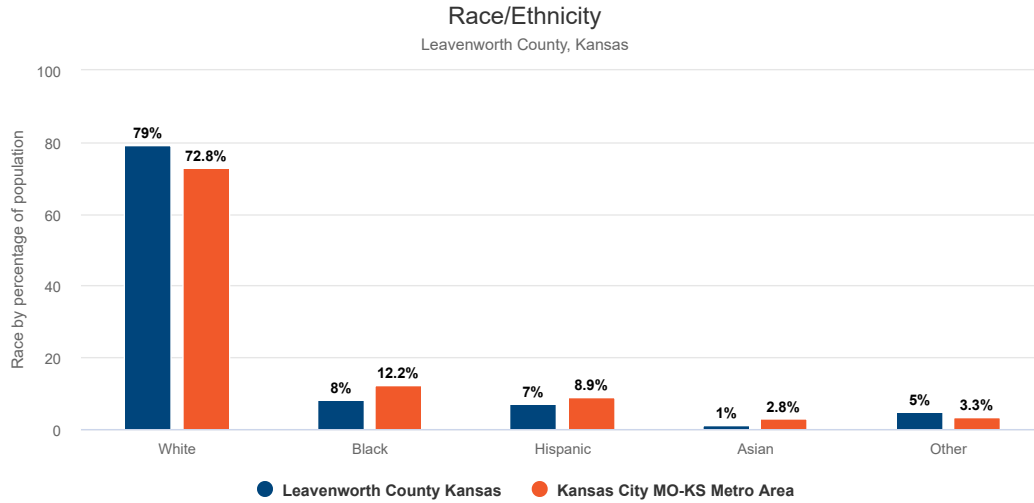
Population by Age



Powered by Highcharts Cloud

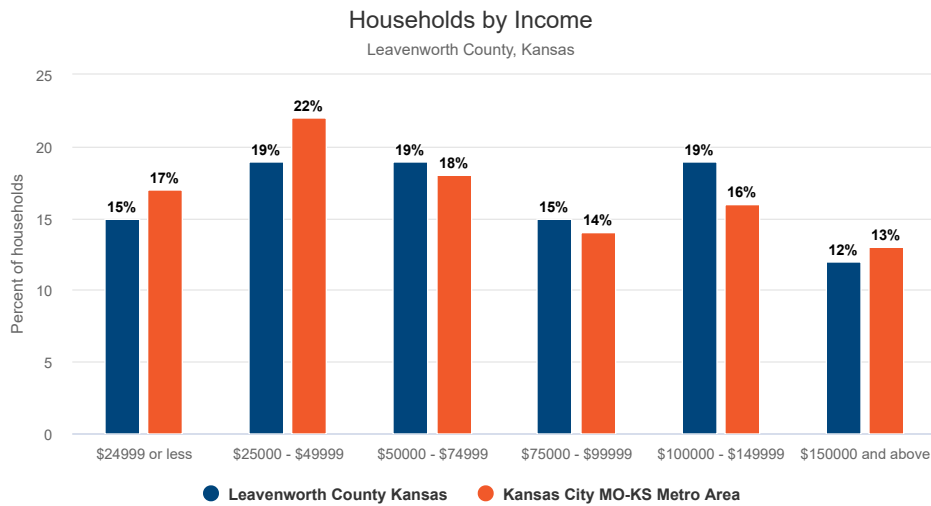
Source: American Community Survey, 2018

Race and Ethnicity



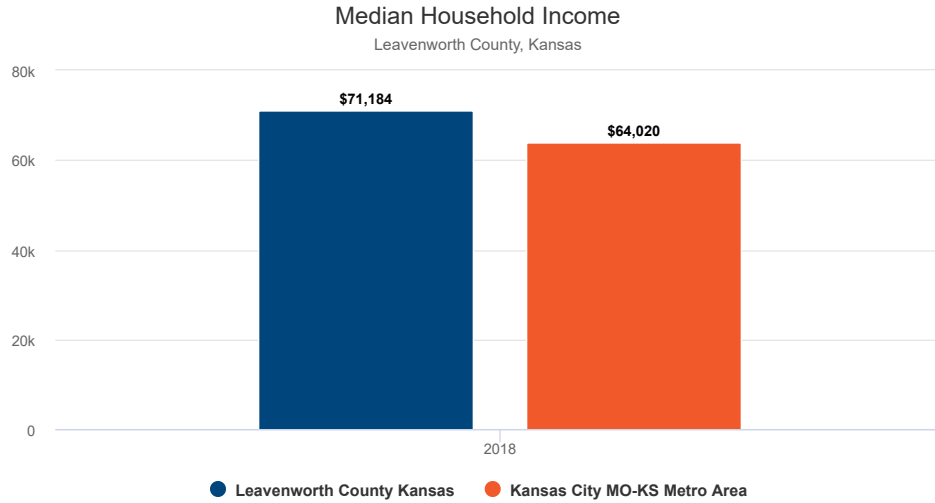
Source: American Community Survey, 2018

Households by Income



Source: American Community Survey, 2018

Median Household Income



Source: American Community Survey, 2018

Language Proficiency

Of the **73,085** people age 5 and older in Leavenworth County, Kansas, **1,483** (or **2.0%**) speak English less than very well. Among those residents of Leavenworth County who speak English less than very well, the top five languages spoken are:

Spanish or Spanish Creole	793
Korean	189
Chinese	182
French (including Patois, Cajun)	79
Other Indo-European Languages	60

Source: American Community Survey, 2018

Educational Attainment

Compared to the rest of the Kansas City region, Leavenworth County residents have a larger percentage of high school diplomas but a lower average number of bachelor's degrees.

Source: American Community Survey, 2018

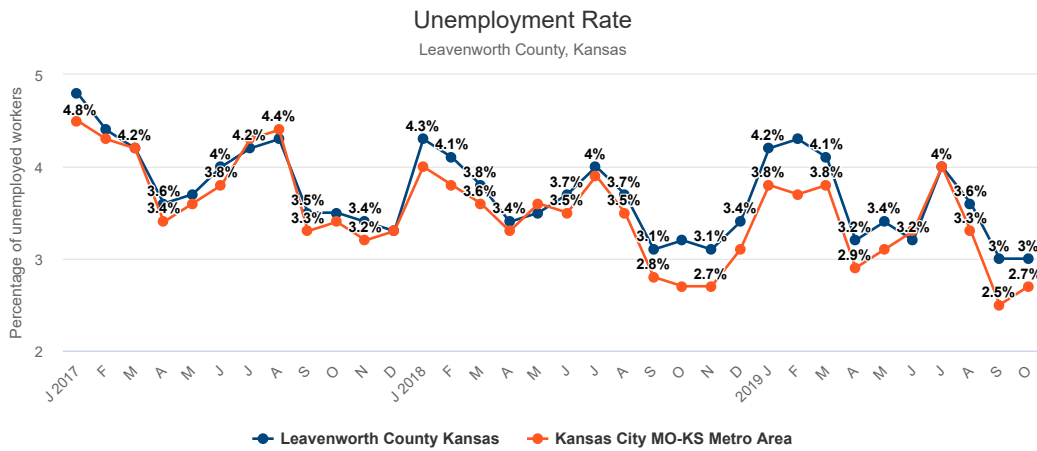
Workforce Commuting Patterns

There are more than 23,000 jobs in Leavenworth County of those 9,965 are held by residents, an additional 7,829 non-residents commute in to work. While 21,338 residents work outside the county.

Workers who live elsewhere and commute to jobs in Leavenworth County	7,829
People who both live and work in Leavenworth County	9,965
Leavenworth County residents who commute to jobs outside the county	21,338

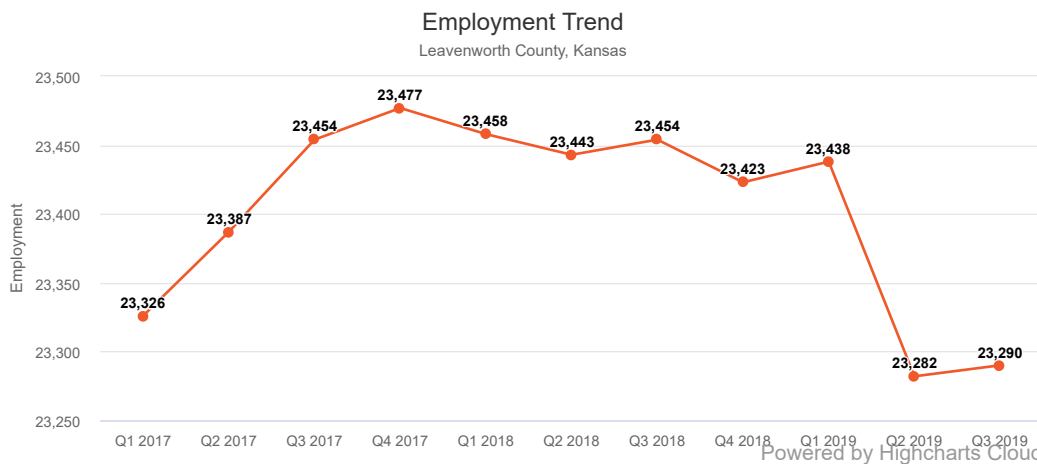
Source: Longitudinal Employer-Household Demographics, 2017

Unemployment Rate



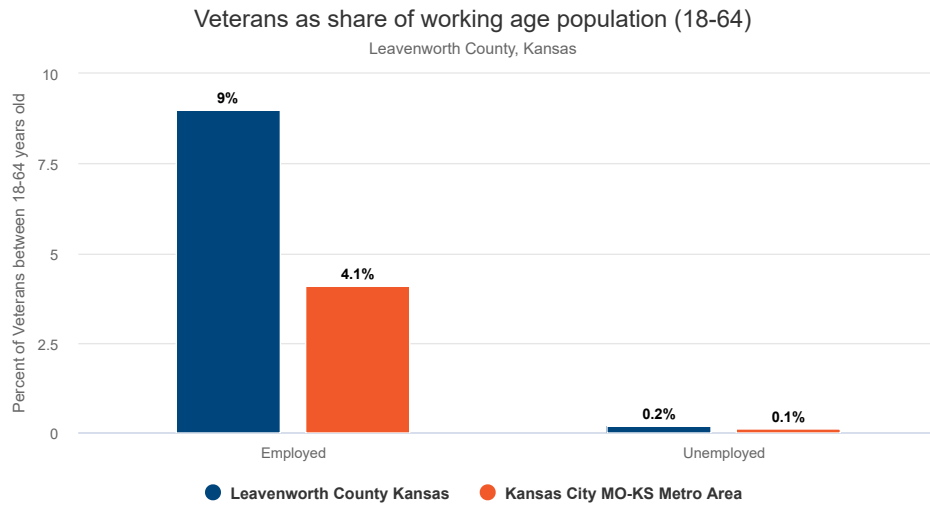
Source: Bureau of Labor Statistics, 2019

Workforce Trends



Source: JobsEQ, 2019

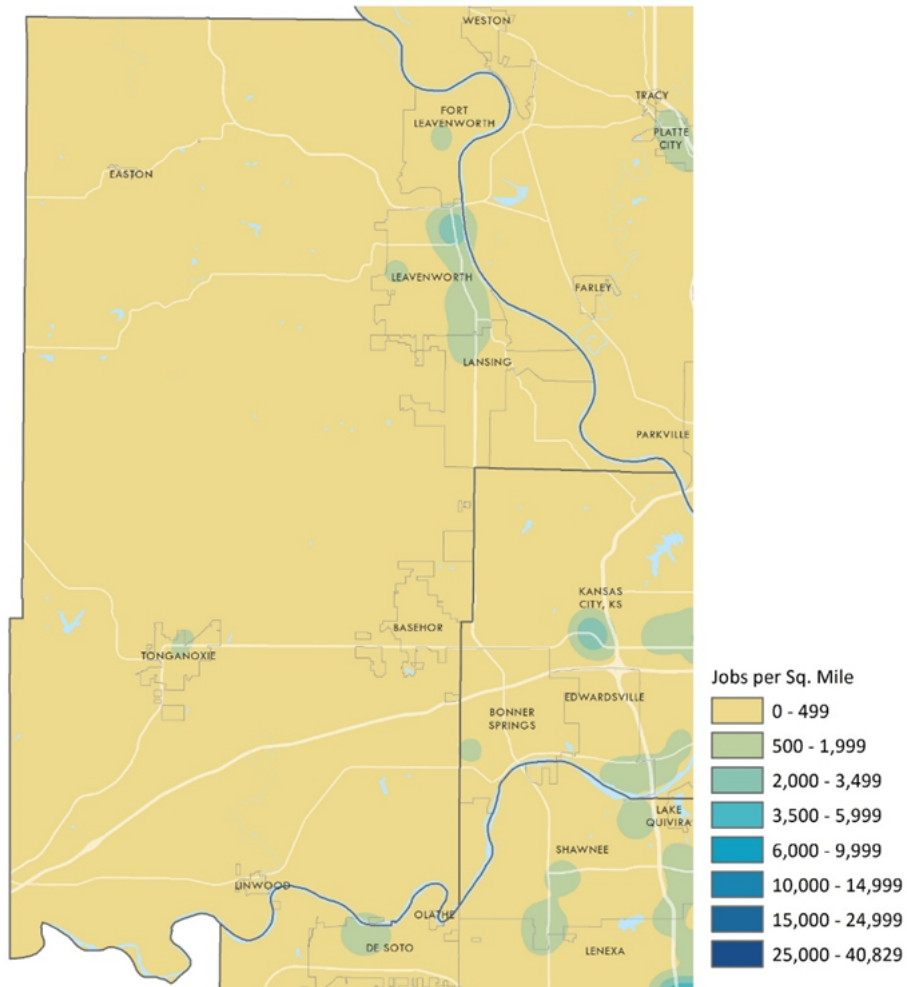
Employment of Veterans



Source: American Community Survey, 2018

Employment Centers

This map shows where large concentrations of employers reside within Leavenworth County.



Competitive Industries

Leavenworth County's top 10 competitive industries are listed by their location quotient. A location quotient shows how the county compares in a particular sector to national numbers. A quotient of one means the county has the same percentage of its workers in that industry as the nation. A number below that means the percentage is lower than the national number, and a number greater than one means the county has a higher percentage of workers employed in that sector.

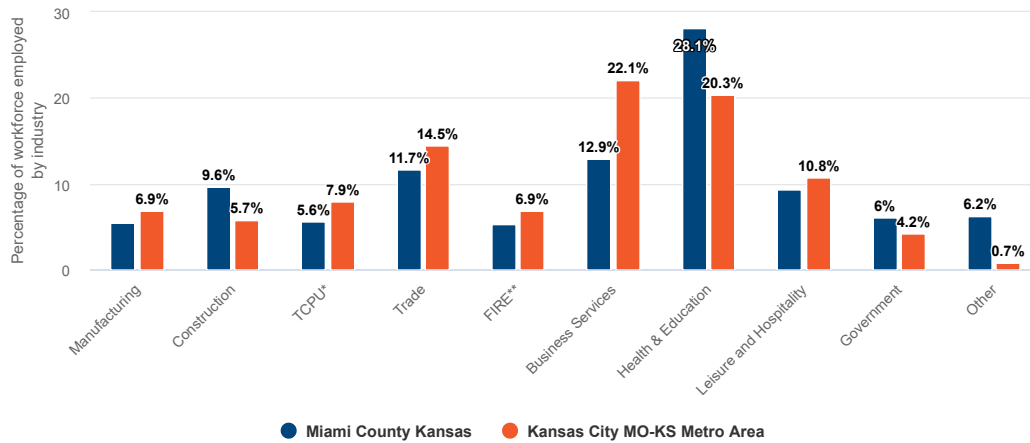
Competitive Industries

NAICS Code	Description	Location Quotient	Employment
928	National Security and International Affairs	23.77	2,069
487	Scenic and Sightseeing Transportation	12.28	67
482	Rail Transportation	7.06	220
323	Printing and Related Support Activities	4.76	313
314	Textile Product Mills	3.82	66
922	Justice, Public Order, and Safety Activities	3.2	899
525	Funds, Trusts and Other Financial Vehicles	2.56	6
111	Crop Production	2.35	283
921	Executive, Legislative and Other Government Support	1.98	889
315	Apparel Manufacturing	1.74	34

Source: JobsEQ, 2019, Q3

Employment by Industry Compared to KC Region

Miami County, Kansas



Source: JobsEQ, 2019, Q3

* TCPU - Transportation, communication and public utilities

** FIRE - Finance, insurance and real estate

The top occupations and skills below were compiled using JobsEQ and are being reported on a quarterly basis.

Top 20 Occupations Most in Demand

1. Retail Salespersons
2. Heavy and Tractor-Trailer Truck Drivers
3. Combined Food Preparation and Serving Workers, Including Fast Food
4. First-Line Supervisors of Food Preparation and Serving Workers
5. Secretaries and Administrative Assistants, Except Legal, Medical, and Executive
6. Registered Nurses
7. Social and Human Service Assistants
8. Sales Representatives, Services, All Other
9. Customer Service Representatives
10. First-Line Supervisors of Retail Sales Workers
11. Driver/Sales Workers
12. Stock Clerks, Sales Floor
13. Education Administrators, Postsecondary
14. Janitors and Cleaners, Except Maids and Housekeeping Cleaners
15. Maintenance and Repair Workers, General
16. Graduate Teaching Assistants
17. Coaches and Scouts

18. First-Line Supervisors of Production and Operating Workers
19. Office Clerks, General
20. Light Truck or Delivery Services Drivers

Top 10 Skills

1. Verbal and written communication
2. Customer Service
3. Cooperative/Team Player
4. Self-Motivated
5. Organization
6. Detail Oriented/Meticulous
7. Adaptability / Flexibility / Tolerance of Change and Uncertainty
8. Accountable / Responsible / Reliable / Dependable / Trustworthy
9. Supervision/Management
10. Problem Solving

Source: JobsEQ, 2019, Q3

On Jan. 2, 2020, there were 2,878 job postings in Leavenworth County.

Source: JobsEQ

